

Priory Park

For Sale

8, Lookout, Priory Park

42' x 20'

Two bedroom, two bathroom

Omar Kingfisher Lodge



£135,000

**For further details or to make an appointment to view,
please telephone James or Lisa on 01473 727393**

The Omar Kingfisher is built with the highest standards in mind insulated to full residential specification and fitted with full gas central heating.

A natural timber exterior is complemented by timber effect uPVC windows and doors. The roof is covered by Decra roof tiles.

The interior is wallpapered and decorated throughout with pine vaulted ceilings. It comes fully furnished and fitted.

The living area is open plan giving a spacious, light and airy feel.

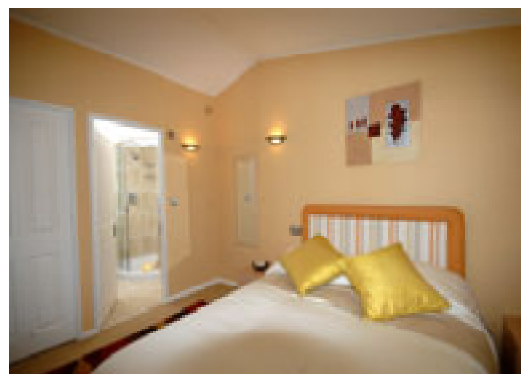


There are many large windows and patio doors leading to a spacious outside deck.

The fitted kitchen comes complete with separate integrated fridge, freezer and dishwasher.

There are two bedrooms. The master bedroom has en-suite shower bathroom as well as a walk-in wardrobe. There is a family bathroom.

This spacious lodge also has a study and utility room.



Located on Lookout within Priory Park, this log cabin holiday home enjoys fabulous views across the river Orwell estuary. With the option of season length from seven to ten months, occupation is available from 1 March to 5 January of the following year making it perfect for a bolthole retreat or foothold in the UK for someone looking to winter abroad.